



You are God's
work of art

St Paul's Academy Welcome Evening

Monday 15 September 2025



You are God's
work of art

Welcome.
Would you help us by doing a parent survey?





You are God's
work of art

Content

Principal's Welcome	Miss Ryan
The year ahead: including rewards & a timeline / key dates	Mrs Stannard Mr Quartey
Our expectations for behaviour	Miss Hepburn
Edulink	Mr Barrett
Study space	Ms O'Neill
Maths fluency: how we are supporting & challenging students	Mr Osbourn
Curriculum support: curriculum, home learning, website links & resources to support your child at home	Heads of Department English: Ms Eba Maths: Mr Abayomi Science: Ms Afolayan
Assessment: how students are assessed to support progress and address underachievement	Ms O'Neill Mrs Stannard Mr Joseph
SEND: how we are supporting students with SEND	Mr Bargery
Enrichment, Careers, Trips & Clubs: how we are developing students culturally	Mr Davis



You are God's
work of art

Principal's Welcome

Service

Emphasizing a community that serves others with compassion and dedication.

Ambition

Encouraging the pursuit of excellence and personal growth.

Inclusion

Fostering a welcoming and inclusive community for everyone.

Nurture

Caring for each other's growth and well-being.

Truth

Seeking and upholding truth in all things.

Peace

Promoting justice and harmony, reflecting the common good.

Achievement

Striving for excellence in all endeavors.

Unity

Building a strong, supportive community.

Love

Embodying love and compassion in all actions.

Stewardship

Caring for the common good and the world around us.

S I N C E 1 9 6 8



ST PAUL'S ACADEMY

***"You are God's
work of art"***

Service

Emphasizing a community that serves others with compassion and dedication.

Ambition

Encouraging the pursuit of excellence and personal growth.

Inclusion

Fostering a welcoming and inclusive community for everyone.

Nurture

Caring for each other's growth and well-being.

Truth

Seeking and upholding truth in all things.

Peace

Promoting justice and harmony, reflecting the common good.

Achievement

Striving for excellence in all endeavors.

Unity

Building a strong, supportive community.

Love

Embodying love and compassion in all actions.

Stewardship

Caring for the common good and the world around us.



You are God's
work of art

The year ahead

The Year 11 Team

Mr R Quartey: Head of Year

Ms K President: Deputy Head of Year

Mrs H Stannard: School Improvement Lead

Mr A Joseph: Education Consultant

Ms B O'Neill: Vice Principal: Quality of Education

Miss M Hepburn: Vice Principal: Behavior & Inclusion

Mr S Abayomi – Head of Mathematics

Ms Y Eba – Head of English

Ms B Afolayan – Head of Science

Ms V Gusciglio – Head of Religious Studies

Form Tutors

11A	Mrs Wallen-Barrett
11B	Ms Galloway
11C	Mrs Akpe
11D	Ms Kerr
11E	Miss Dixon
11F	Miss Clift & Mr Fahy
11G	Mr Barrett & Mrs Cooper
11H	Mrs Willis

Big Moments: Key Dates for Y11

PPE 1 begins
24th Nov 2025

PPE 1 Results Assembly
19th Dec 2025

**TERMINAL EXAMS
BEGIN**
4th May 2026

May Half Term Revision
26th - 28th May

**End of Examination
Season** 17th June 2025

Careers Fair
7th Oct 2025

Parents' Evening
21st Jan 2026

Easter Revision
31st Mar - 2nd Apr

Celebration Assembly
13th April



PPE 2 begins
23rd Feb 2026

PPE 2 Results Assembly
23rd March 2026

Leavers' Service
17th June 2026

PROM
19th June 2026





You are God's
work of art

What we are offering students

- Quality teaching in lessons
- Guided study materials and guides
- Dedicated study space
- Guidance on effective revision
- Targeted interventions
- Revision sessions





You are God's
work of art

What we need from students

- **Attend** school every day
- Be **hardworking**, highly motivated and contribute fully to learning
- Take full **responsibility** for their own learning, show **perseverance**, meet all deadlines and **complete work** to the very best of their ability
- **Respond** to all **feedback** given to improve their work.
- Complete **home learning** and **revision** thoroughly - being fully equipped for lessons





You are God's
work of art

How to support your child

- Help them create a **revision timetable**
- Ensure they have a **distraction free study space**
- Work with them to create an **effective study routine**
- Make sure they are **fully equipped** to study

- Encourage them to get a **good night's sleep**
- Help them to they **eat well** and **drink water**
- Ensure they **schedule relaxation time**
- Encourage them to have a **growth mindset**



The Pomodoro Technique

1. Identify your tasks



2. Set 25 minutes on a timer



3. Wait until the timer rings



4. Take a 5 minute break



Repeat & after the 4th cycle take a 25 minute break



You are God's
work of art

Student rewards: Gain A Grade



- It's all about moving forward and making small gains!
- Every grade of progress is valuable
- There is going to be a **prize draw in December**
- Students will be **entered once per grade they improve** in this set of PPE exams compared to Year 10 PPE exams e.g. Moving from a 3 to a 5 in Mathematics and a 5 to a 6 in English would equal 3 entries

•Prizes

- First prize £50
- Second prize £20
- Third prize £10





You are God's
work of art

Prom Points – How to earn them

1 prom point for:

- One week full **attendance** each week
- Attendance at your **revision or intervention** sessions (ALL SUBJECTS)
- Edulink **achievement point**
- **Punctuality** to lessons (and exams!)

10 prom points for:

- Excellent **attitude to learning** (data drops in December and March)
- **Exceptional effort/progress/work** – referred by teachers
- **Gaining a grade in PPE exams**



You are God's
work of art

135

The Pursuit of Excellence: A year of no excuses

"Alone we can do so little; together we can do so much." — Helen Keller

- **Communication & School Partnership**
- **Home Environment & Emotional Support**
- **Academic Help**





You are God's
work of art

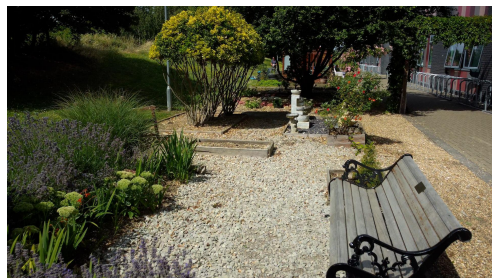
Catholic Life of the School



You are God's work of art

Catholic life of the School

Our very own chapel & Peace Garden



The Catholic Life of the School

Where every child is known, heard, seen and loved.



Events with the Church





You are God's work of art

Events throughout the year

Our Charities

Weybourne
Care Home




**The Catholic
Life of the School**

Where every child is known,
heard, seen and loved.





You are God's work of art

House System - linked to our values



St Carlos Akutis



Blessed Chiara Badano



Blessed Josephine Bakhita

Blessed Oscar Romero



Blessed Floribert Kositi



You are God's
work of art

Our expectations for behaviour



You are God's work of
art

Behaviour Expectations



RAISING
EXPECTATIONS

...and keeping them raised!



You are God's work of
art

**Our students
have the right
to learn, in an
environment
which is
disruption
free.**

Behaviour Expectations





You are God's work of
art

Firm but fair

What can stop Teaching & Learning:

- Lateness to lesson
- Not following the 3Bs





You are God's work of
art

Firm but fair

Sanctions

- **Lateness to lesson**
 - Upto 5 minutes late = Centralised Detention [CD]
 - More than 5 minutes late = Principal's Detention [PD]
- **Truancy**
 - Returned to lesson & a PD
- **Disruption to learning**
 - Negative behaviour points, behaviour conversation, contact home, teacher detention, removal from lesson, CD

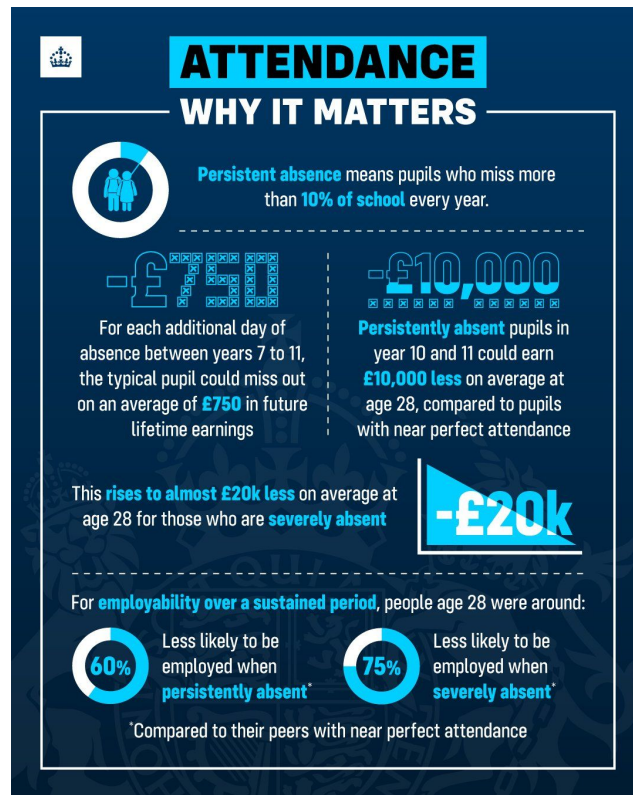


You are God's work of art

Firm but fair

Lateness to school

- Attendance **and** good punctuality matters
- Arrival between 8.22am - 8.45am = CD
- Arrival between 8.45am - 9.49am = PD
- Arrival after 9.50am = Seclusion





You are God's work of
art

We are a community



Our students wear their uniform with pride

- School uniform is fundamental to ensuring equality amongst students
- Our uniform must be worn correctly so that students look smart and are proud to represent our school

The fundamentals

- Skirts worn at the knee, trousers worn at the waist
- Black socks
- No hoodies, techs or Nike Millers
- No jewellery, no piercings
- No false eyelashes, acrylic nails, nail varnish or slits in eyebrows
- Natural hair colours only, no extreme hairstyles

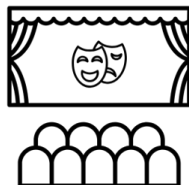


You are God's work of art

St Paul's Academy Rewards



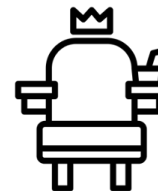
Year 7
Silent Disco



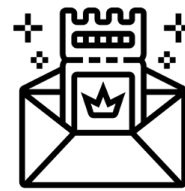
Year 8
Theatre trip



Year 9
Day trip to France

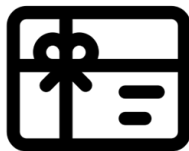


Year 10
Private Cinema Viewing (x2)



Year 11
Prom

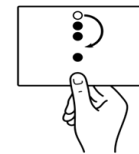
- Verbal praise
- Reward points (via Edulink)
- Emails home
- Postcards home
- Positive phone call
- Hot chocolate & cookie
- Fast-track lunch passes
- Lapel badges
- Public display of high quality work
- Acknowledgement through assemblies
- Principal's Commendation Award



£10 voucher



Free hot chocolate & cookie



Jump the queue card



Awarded by staff
visiting lessons
across the day



You are God's
work of art

Homework

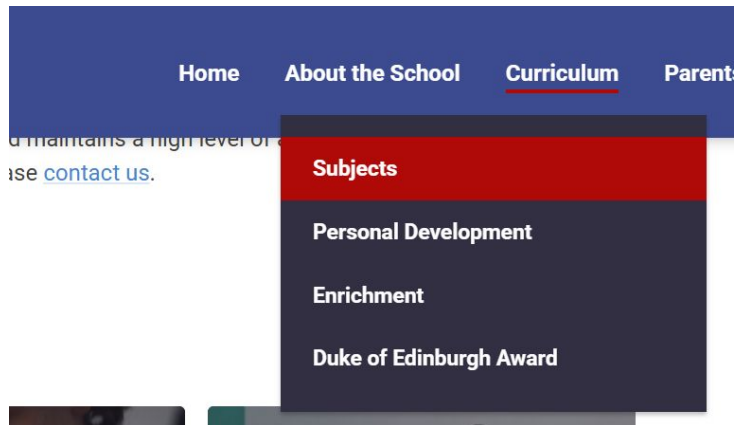
Knowledge

Independence

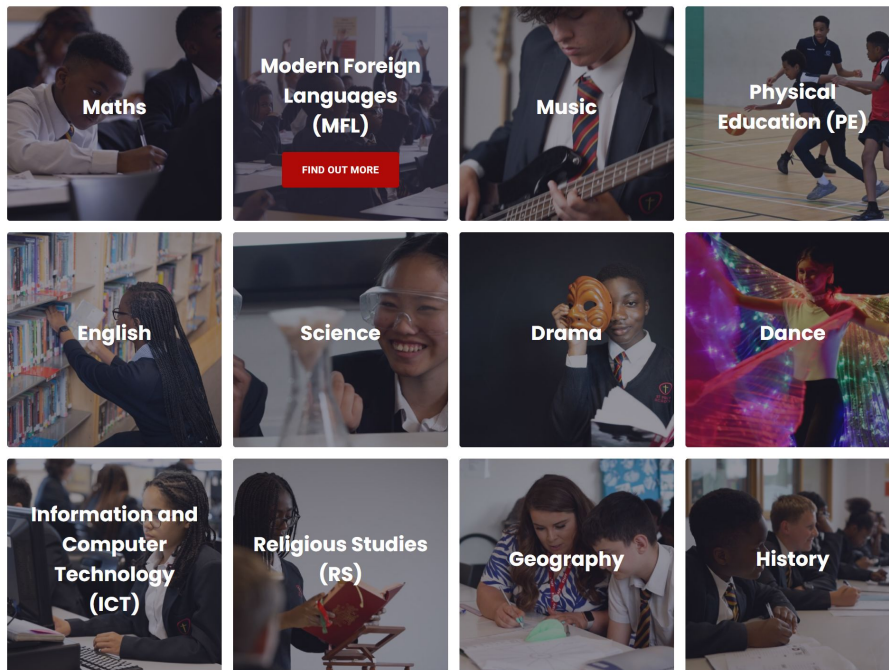
Long-term memory



You are God's
work of art



Google Classroom





You are God's
work of art

EduLink

Want to know
how your
child is
doing?



edulinkone

...stay connected.



Want to know
how your child
is doing?



edulinkone ...stay connected.



Download on the
App Store



You are God's
work of art

Study place



You are God's work
of art

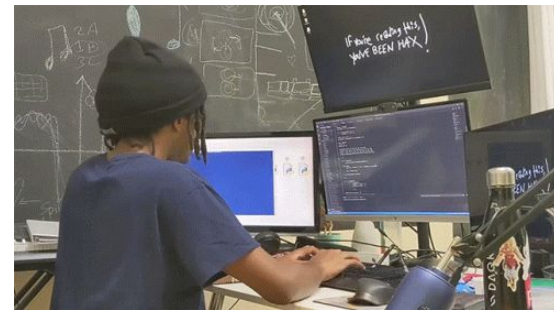
Key Features of our new Library



Silent Reading
Zone



Quiet Study
Zone



Research
Zone

Find your space! Whether it's reading quietly, working on a project, or using digital tools, there's a place for you here.

Library Rota

	Before School	Break	Lunch	After School
Monday	7:45 - 8:10	10:40 - 10:55	Year 7: 12:40 - 1:25	3:10 - 4:15 <i>(Year 9 Homework Club)</i>
Tuesday	7:45 - 8:10	10:40 - 10:55	Year 8: 11:50 - 12:35 Year 11: 12:40 - 1:25	3:10 - 4:15 <i>(Year 8 Homework Club)</i>
Wednesday	7:45 - 8:10	10:40 - 10:55	Year 9: 12:40 - 1:25	2:20 - 3:15 <i>(Year 11 Priority)</i>
Thursday	7:45 - 8:10	10:40 - 10:55	Year 10: 11:50 - 12:35 Year 11: 12:40 - 1:25	3:10 - 4:15 <i>(Year 10 Homework Club)</i>
Friday	7:45 - 8:10	10:40 - 10:55	Year 11: 12:40 - 1:25	3:10 - 4:15 <i>(Year 7 Homework Club)</i>



You are God's
work of art

Maths fluency

How we are supporting and challenging
students



You are God's
work of art

“a student can recall key mathematical facts accurately and efficiently, use this knowledge flexibly to choose the best strategy for a problem, and apply these skills across various contexts”

- Recall and automaticity:** the effortless recall of facts, such as number bonds within 10 and times tables facts, and understanding the relationship between these facts. 14×5 is the same as 10×5 add 4×5 .
- Procedural fluency:** being confident and accurate with using procedures and being able to select the most appropriate method for the task at hand. (rules and routines)
- Flexibility and adaptability:** the skill of moving between different contexts and recognising connections between them. For example, understanding the concept of $\frac{1}{4}$ in various situations; Quarter of an hour, 25% of a value, a quarter of a circle etc. Doubling and halving – Equivalent fractions $\frac{1}{2}$ is the same as $\frac{5}{10}$
- Relieve Cognitive Load :** focus on concepts/problem solving rather than long term recall. Recall of facts ($3+5 = 8$ leads to $5+3=8$, $8-3=5$ and $8-5=3$)
- Takes Time :** Practice
- Why?**



You are God's
work of art

Curriculum support

Curriculum, home learning, website links
& resources to support your child at
home



You are God's
work of art

Year 11 English

English Language overview

Exam board – AQA

English Language

- **Paper 1 – 1hr 45 minutes** (comprehension, language analysis, structure, evaluation and creative writing).
- **Paper 2 – 1hr 45 minutes** (comprehension, evaluation, language analysis, structure, comparison, transactional writing).
- **Spoken language assessment** - separate grade (students will complete this academic term)



You are God's
work of art

Year 11 English

English Literature overview

Exam board – AQA

English Literature

- **Paper 1** – 1hr 45 minutes – extract based essay questions on '**Macbeth**' and '**A Christmas Carol**'.
- **Paper 2** – 2hrs 15 minutes – 'closed book' essay question on '**An Inspector Calls**', comparative poetry essay on '**Power & Conflict**' poetry, two Unseen Poetry questions.



You are God's
work of art

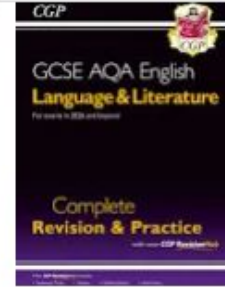
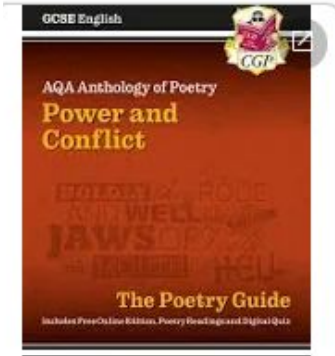
How can my child revise for English

- **Read** regularly
- **Timed practice**
- **Attend boosters and interventions**
- Utilise revision **booklets**
- Listen to **masterclass recordings**
- Work through revision guides - small chunks
- Week by week lesson revision structure
- **Weekly homework on Seneca via Google classroom** will be set every **Monday**
- **Weekly timed pieces** will be completed in class
- Familiarise yourself with ***checklists, knowledge organisers and learning journey***
- Create flashcards

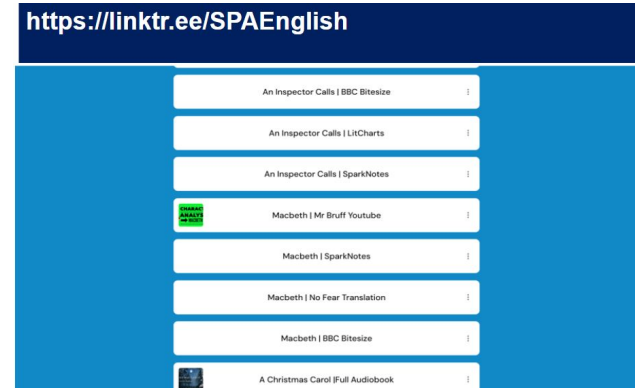


You are God's work of art

Recommended Resources



<https://linktr.ee/SPAEnglish>





You are God's
work of art

Curriculum - Maths (KS4)

FOUNDATION ROUTE

YEAR 10

GCSE (9-1) Foundation
Unit 1 Number
Unit 2 Algebra
Unit 3 Graphs, tables and charts
Unit 4 Fractions and percentages
Unit 5 Equations, inequalities and sequences
Unit 6 Angles
Unit 7 Averages and range
Unit 8 Perimeter, area and volume 1
Unit 9 Graphs
Unit 10 Transformations
Unit 11 Ratio and proportion
Unit 12 Right-angled triangles
Unit 13 Probability
Unit 14 Multiplicative reasoning
Unit 15 Constructions, loci and bearings

YEAR 11

GCSE (9-1) Foundation
Unit 16 Quadratic equations and graphs
Unit 17 Perimeter, area and volume 2
Unit 18 Fractions, indices and standard form
Unit 19 Congruence, similarity and vectors
Unit 20 More algebra

HIGHER ROUTE

YEAR 10

GCSE (9-1) Higher
Unit 1 Number
Unit 2 Algebra
Unit 3 Interpreting and representing data
Unit 4 Fractions, ratio and proportion
Unit 5 Angles and trigonometry
Unit 6 Graphs
Unit 7 Area and volume
Unit 8 Transformation and constructions
Unit 9 Equations and inequalities
Unit 10 Probability
Unit 11 Multiplicative reasoning
Unit 12 Similarly and congruence
Unit 13 More trigonometry
Unit 14 Further statistics
Unit 15 Equations and graphs

YEAR 11

GCSE (9-1) Higher
Unit 16 Circle theorems
Unit 17 More algebra
Unit 18 Vectors and geometric proof
Unit 19 Proportion and graphs



You are God's
work of art

Support outside the classroom

Sparx Maths

A personalised home learning platform that adapts to the level of each individual student and develops mathematically thinking, problem solving and numeracy skills in the form 1 hour weekly home learning tasks

Sparx	P8
0%	-1.29
1%-10%	-0.79
10%-30%	-0.14
30%-60%	0.05
60-75%	0.03
76-90%	1.03
90% +	1.37

Sparx Maths

Form time

Numeracy Ninja (**New KS3**) - Develops students fluency in key mathematical skills that are prerequisites for success at Maths at 11-16

Mark Maximisers (**New KS4**) - Allows students to access targeted retrieval based one mark questions to strengthen their understand of pre taught content

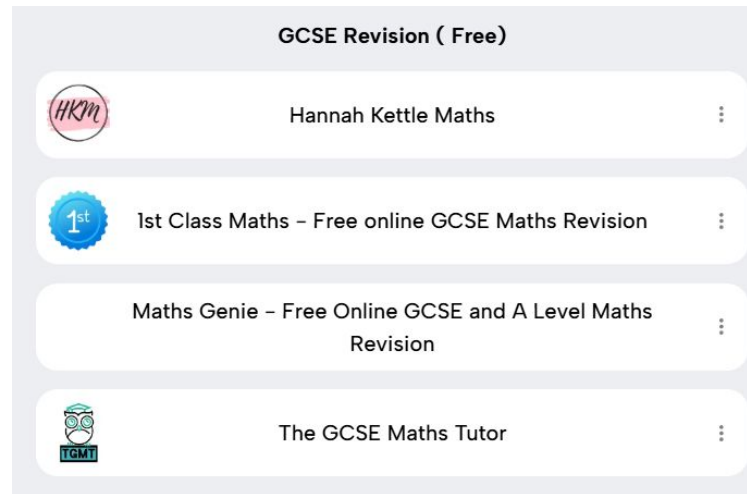
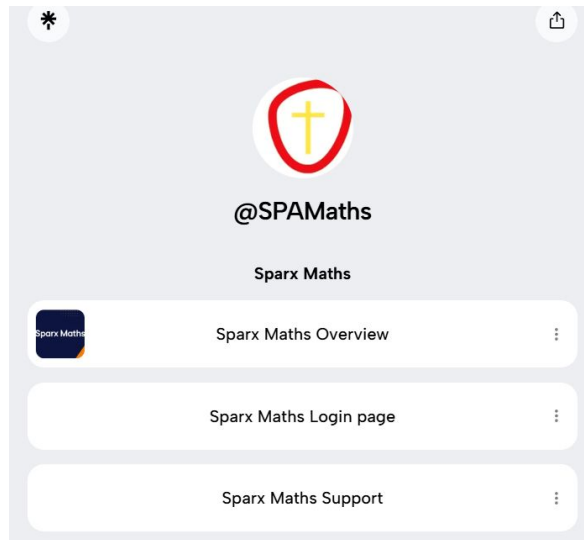




You are God's
work of art

Supportive resources

<https://linktr.ee/SPAMaths>





KS4 science

You are God's work of art

Curriculum Scope
Students will develop a deep and secure understanding of key scientific concepts in biology, chemistry, and physics. They will explore how scientific knowledge is built through experimental evidence and how it applies to the world around them. The curriculum is designed to help students make meaningful links across the three sciences while building the skills needed to analyse data, evaluate evidence, and draw informed conclusions. Through regular practical work, students will develop their confidence in working scientifically.

KS4 – Year 11 – B5 – Homeostasis and Response

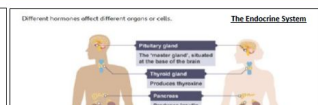
Key Vocabulary	
Tier 1	
Balance	A state where things are equal or stable.
Control	To manage or direct something so that it stays in a certain condition or state.
Temperature	A measure of how hot or cold something is.
Response	An action or reaction to a change or stimulus.
Change	A shift or alteration from one state or condition to another.

Receptors to effectors

Information from receptors passes along neurones, as electrical impulses to co-ordinators such as the central nervous system or CNS. The CNS is the brain and spinal cord. Muscles contracting or glands secreting hormones are the response or effectors controlled by the CNS.

Stimulus → receptor → coordinator → effector → response

The diagram summarises how information flows from receptors to effectors in the nervous system.



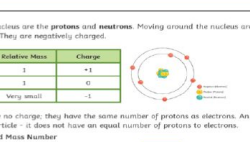
Key Vocabulary	
Tier 1	
Particle	A small portion of matter, such as an atom or molecule.
Metal	An element that typically conducts electricity and heat, is shiny, and is malleable and ductile.
Charge	A property of a particle that determines its electromagnetic interaction, usually described as positive or negative.
Change	To make or become different, such as in a chemical reaction.
Atom	The basic unit of matter, made up of protons, neutrons, and electrons.

Atoms

Contained in the nucleus are the **protons** and **neutrons**. Moving around the nucleus are the **electrons**. They are negatively charged.

Atomic Number and Mass Number

Overall, atoms have no charge: they have the same number of protons as electrons. An ion is a charged particle - it does not have an equal number of protons to electrons.



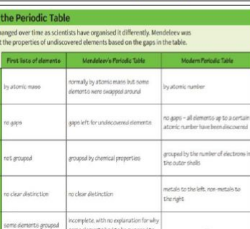
Scientist	Year	Discovery
Johann Dalton	1808	Atoms were first described as solid spheres.
J.J. Thomson	1897	Plum pudding model - the atom is a ball of charged with electrons scattered throughout.
Ernest Rutherford	1911	Alpha scattering experiment - atoms consist of a small, dense, positively charged nucleus. Alpha particles were strongly repelled.
Mahdi Bohr	around 1913	Electrons are in shells, orbiting the nucleus.
James Chadwick	around 1940	Discovered that there are neutrons in the nucleus.

Key Vocabulary	
Tier 2	
Nucleus	The central part of an atom, containing protons and neutrons.
Electron	A negatively charged subatomic particle found outside the nucleus of an atom.
Proton	A positively charged particle found in the nucleus of an atom.
Neutron	A neutral particle found in the nucleus of an atom that has no charge.
Periodic Table	A table of elements arranged by increasing atomic number, showing periodic patterns in their properties.

Development of the Periodic Table

The Periodic Table has changed over time as scientists have organised it differently. Mendeleev was able to accurately predict the properties of undiscovered elements based on the gaps in his table.

Periodic Table	First list of elements	Dobereiner's Periodic Table	Mendeleev's Periodic Table
How are elements ordered?	by atomic mass	initially by atomic mass but some elements were swapped around	by atomic number
Are there gaps?	no gaps	gaps left for undiscovered elements	no gaps - all elements fit to certain atomic number have been discovered
How are elements grouped?	not grouped	grouped by chemical properties	grouped by the number of electrons in the outer shells
Metals and non-metals	no clear distinction	no clear distinction	metals to the left, non-metals to the right
Problems	some elements grouped inappropriately	inconsistent, with no explanation for why some elements didn't fit	fit in the appropriate groups



Distillation

To separate out mixtures of liquids.

1. **Simple distillation** - separating a liquid from a solution.

2. **Fractional distillation** - separating out a mixture of liquids. Fractional distillation can be used to separate out crude oil into fractions.

Separating out salt from rock salt:

- Gravel the mixture of rock salt.
- Add water and stir.
- Filter the mixture, leaving the sand in the filter paper.
- Evaporate the water from the salt, leaving the crystals.

Distillation: In a mixture there are no chemical bonds, so the elements are not separated. Examples of mixtures are air and sea water. Chromatography: For mixtures, no separate out mixtures. Examples: separate dyes from ink.

Crystallisation: To separate a soluble solid from a solution. In this using of separating out salt.

Gasification: To separate a volatile liquid from a mixture. In this using of separating out salt.

Separating out salt from rock salt:

- Gravel the mixture of rock salt.
- Add water and stir.
- Filter the mixture, leaving the sand in the filter paper.
- Evaporate the water from the salt, leaving the crystals.

Distillation: In a mixture there are no chemical bonds, so the elements are not separated. Examples of mixtures are air and sea water. Chromatography: For mixtures, no separate out mixtures. Examples: separate dyes from ink.

Crystallisation: To separate a soluble solid from a solution. In this using of separating out salt.

Gasification: To separate a volatile liquid from a mixture. In this using of separating out salt.

Key Vocabulary	
Tier 3	
Electron Shell	A region around the nucleus of an atom where electrons are likely to be found, organized into energy levels.
Group	A vertical column in the periodic table.
Period	A horizontal row in the periodic table.
Noble Gases	Group 0 elements in the periodic table, known for being chemically inert due to their full outer electron shells.
Alkali Metals	Group 1 elements are highly reactive and form alkaline solutions when combined with water.
Halogens	Group 7 elements, including fluorine, chlorine, bromine, and iodine, which are highly reactive non-metals.

Key Knowledge

- The atomic number is the number of protons in the nucleus of an atom and is used to arrange elements in the periodic table.
- The mass number is the sum of protons and neutrons in an atom's nucleus and gives the atom's mass.
- Electrons orbit the nucleus in shells, and the arrangement of electrons determines an atom's chemical properties and reactivity.
- Elements are arranged in the periodic table based on their atomic number, and elements in the same group share similar chemical properties.
- Groups (vertical columns) in the periodic table represent elements with the same number of valence electrons, which determine their reactivity.
- Periods (horizontal rows) represent elements with the same number of electron shells.

Element	Group	Period	Electrons	Neutrons
H	1	1	1	1 + 0
He	0	1	2	2 + 1
Li	1	2	3	3 + 3
Be	2	2	4	4 + 5

Elements

Elements are made of atoms with the same chemical atoms can be represented as symbols.

N = nitrogen F = fluorine Zn = zinc Ca = calcium

Isotopes - an isotope is an element with the same number of protons but a different number of neutrons. They have the same atomic number, but different mass number.

Compounds - a compound is when two or more elements are chemically joined. Examples of compounds are carbon dioxide and magnesium oxide. Some examples of formulas are CO₂, HCl, H₂O, Na₂SO₄. They are held together by chemical bonds and are difficult to separate.



Assessment and Exams

There are **6 exam papers** taken at the end of **Year 11**, whether a student is doing **Combined Science** or **Triple Science**.

Combined

6 papers total (2 Biology, 2 Chemistry, 2 Physics)
Each paper is: 1 hour 15 minutes
Worth 16.7% of the final grade (1/6)
All papers are equally weighted
Combined result gives 2 GCSE grades
(e.g., 6-6 or 5-4)

Triple

6 papers total (2 papers per subject)
Each paper is: 1 hour 45 minutes
Worth 50% of that subject's GCSE
Students receive 3 separate GCSEs in Biology, Chemistry, and Physics

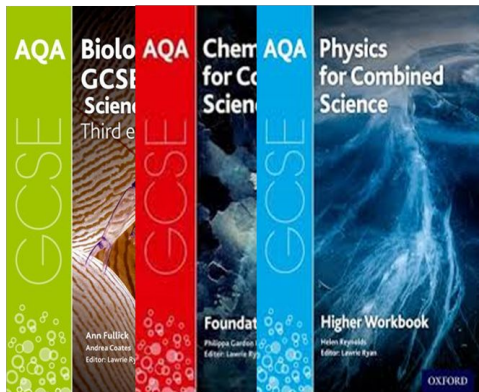
No coursework – but practical skills are assessed in the exams



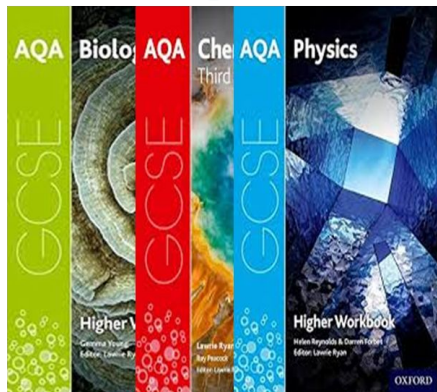
You are God's work of art

KS4 Science - Recommended Resources

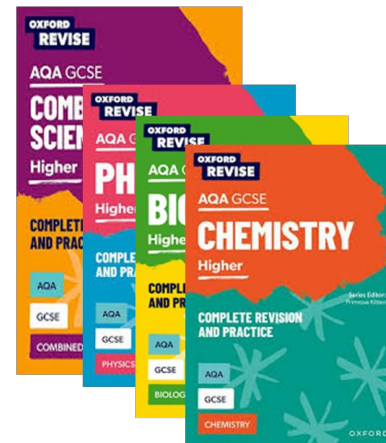
Combined Science



Triple



Exam Practice





You are God's
work of art

Assessment

How students are assessed to support progress and address underachievement

Exemplar sixth form entry criteria

- The overall requirement for entry to the Sixth Form is an Average Point Score of **6.00 across your best 8 subjects** which must include English and mathematics (English & Maths grade 5 or above).

Target Grades

Starting points

KS2 data SATs results dictate GCSE expectations

Students are grouped as either

- Low prior attainers (LPA)
- Middle prior attainers (MPA)
- High prior attainers (HPA)

Progress

A progress score of zero means the student achieved their target. Negative means they underachieved. Positive means they excelled.

- LPA students are expected to achieve a grade 3+*
- MPA students are expected to achieve a grade 5+
- HPA students are expected to achieve a grade 7+

Our Actions

Prior attainment now appears on your SIMS registers

Targets have been set to enable meeting national targets

Increased focus on checking understanding and the formative use of summative data



You are God's work of
art

When will we receive reports?

		Autumn	Spring	Summer
Y11	PPE Exams Begin	24th November	23rd February	
	Reports sent home	Results assembly (9 th January)	23 th March	



You are God's
work of art

SEND

How we are supporting students with
SEND



You are God's work of
art

SEND at St Paul's - How do we support your child?

- Three qualified SENCOs who all teach within the school.
- Dedicated suite of rooms at the heart of the school - 'The Evergreen Hub'
- In class support, where appropriate.
- High quality interventions covering a range of subject areas: Literacy, Maths, Emotional Regulation, Support with homework.
- Work in partnership with pastoral team across the school.
- Very strong links with outside agencies - regular visits from Speech and Language Therapists, Educational Psychologists, ASC Outreach Service, Mentors and Counselling.
- The Lily Pad group.
- Regular Coffee Morning drop ins for Parents and Carers.





You are God's
work of art

Enrichment, Careers, Trips & Clubs

How we are developing students
culturally

Health & Social Care: Greenwich NHS
(Y10-11, 14/11/25)

English:

An Inspector Calls (Y10, 16/02/26)
Poetry Tour (Y10, 18/05/26)

Business & Enterprise

Bank of England (Y10, TBC)

Geography

Nat. History Museum (Y9, 02/02/26)
Reculver & Herne Bay (Y8, 20/04/26)
Thames Barrier (Y7, 22/06/26)

Media

Revision Study Day (Y11, 26/02/25)
Sky Up Academy Fiction (Y10, 04/11/25)
The Glassworker + Q&A (Y10, 12/11/25)
Sky Up Academy Studios (Y10, 13/08/26)
Into Film Festival (Y10, Aug 2026)

ICT

Nat. Museum Computing (16/10/25)

Dance: Sadler's Wells (Y7-11, 01/12/25)
Move It Dance (GCSE, 20/03/26)



Careers

Keynote Speakers (All yrs, 09/09/25)

Design Technology

Design Museum (Y11, 15/10/25)
Design Trip (Y10, 11/02/26)

PE

Rec Football GOALS (Y10, 15/10/25)

Spanish

Pan's Labyrinth (Y11, 14/11/25)
Penguin Lessons (Y10, 19/11/25)
Spanish Cooking Workshop (Y9, TBC)

Science

Science Museum (Y7, 13/10/25)
Royal Observatory (Y8, 25/11/25)
Urenco (Y10, 09/02/26)
London Zoo (Y9, 17/04/26)

History

Debate Mate (Launch Nov 2025, comps
Jan–May)
Windsor Castle (Y7, 14/11/25)

DofE

Bronze Award Club (Y11, from 08/09/25)

Drama

New Views Trip (Y10, Dec 2025)
KS3 Theatre Trip (Y7-9, Feb 2026)
KS3 Theatre Trip 2 (Y7-9, Jul 2026)



You are God's work of art

Events throughout the year

Debate Mate



Speak Out Challenge





You are God's work of art

Events throughout the year

Duke of Edinburgh Bronze Award



"The Duke of Edinburgh Award has given me the opportunity to learn new skills and develop them. Also, the expedition/camping experience was fun and helpful towards my chosen future career." Hayden (Year 10)



Duke of Edinburgh Silver Award





You are God's work of art

Events throughout the year

World Book Day Q&A Event



An online session with author Bolu Babalola - *Love in Colour* and *Honey & Spice*



You are God's work of art

Events throughout the year

Feast of St Paul & Culture Day





You are God's work of art

Trips throughout the year

Geography Physical Fieldwork



Employer Encounters- Ford





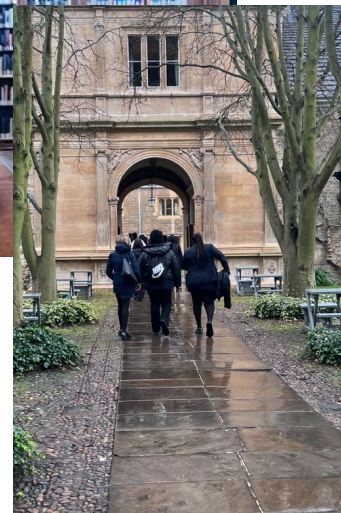
You are God's work of
art

Trips throughout the year

Visit to St Catherine's College, Oxford University



Visit to Gonville and Caius College, Cambridge University





You are God's work of art

Beyond the classroom



St Paul's Acader @STPGreenwich **Promote**

The Year 7 Gardening Club have been busy planing pansies this week 🌸 to sell next week with all money raised going to @CAFOD @CAFODSchools Plants will be available Monday lunch time in the garden or after school in the Chapel.

8:23 PM · Mar 20, 2023 · 1,378 Views

View post engagements

1 1 9

Post your reply **Reply**

CAFOD @CA · Mar 21, 2023 This is wonderful, the pansies are looking great! Thank you to your year 7 pupils 🌱

1 679



Artsmark Silver Award
Awarded by Arts Council England

Monday	Tuesday	Wednesday	Thursday	Friday
Year 8 Athletics lunchtime Sports Hall	Year 7 Boys Football 15:10 - 17:00 4G	Morning Basketball Sports Hall	Year 7-11 Girls football 15:10 - 17:00	Year 7 Athletics Sports Hall 15:10 - 17:00
Year 8 Boys Football 15:10 - 17:00 Grass Pitch	Year 9 Boys Football 15:10 - 17:00 4G	Year 7 - 11 Percussion Club 14:20 - 15:10	Fitness Suite 15:10 - 16:20	Year 8 Boys Football Training 15:10 - 17:00
Year 10 & 11 Football 15:10 - 17:00 4G	Year 8 & 11 Netball 15:10-16:30 Sports H/Muga		Recreational Football 15:10 - 16:20	Year 7 - 11 Dance Freestyle 15:10 - 16:00
Year 7, 8, & 10 Netball 15:10 - 16:30 Sports Hall / Muga	Year 7-11 Fusion Dance 15:10 - 16:00 Dance Studio		Year 7 - 11 Afro Dance 15:01 - 16:00	Cultural Diversity Club 15:20 - 15:50 starting Spring Term 1
Year 11 Duke of Edinburgh Bronze Award 15:15 - 16:15	Careers Keynote Speakers 15:15 - 16:15 Main Hall		Be Wild Club 12:40 - 13:30	Year 7 - 11 Band 15:10 - 16:00
Year 9 Homework Club 15:20 - 16:00 Maths Cluster	Year 8 Homework Club 15:20 - 16:00 Maths Cluster		Year 10 Homework Club 15:20 - 16:00 Maths Cluster	Year 7 Homework Club 15:20 - 16:00 Maths Cluster
Year 11 BTEC & CS Catch-up & Exam Prep 15:20 - 16:00	Year 11 Hospitality & Catering - Boost My Skills Club 15:10 - 16:20		Year 7 - 11 Choir 15:10 - 16:00	
Year 9 & 10 Drama National Theatre News 15:20 - 16:00	KS3 Art Exploring Different Media 15:20 - 16:00		Year 7, 9 & 11 Keyboard Club Lunchtime	
KS3 Spanish Conversation Club 15:20 - 16:00 E4			KS4 Spanish Conversation Club 15:20 - 16:00 E4	
			KS3 Media Film Club 15:20 - 16:00	
			Year 7 Science Club 16:15 - 16:00 <i>S10 starts 03.10.25</i>	



You are God's work of art

Careers and the Gatsby Benchmarks

GATSBY BENCHMARKS

- 1** A stable career programme
- 2** Learning from labour market information
- 3** Addressing the needs of every pupil
- 4** Linking curriculum learning to careers
- 5** Encounters with employers and employees
- 6** Experience of workplaces
- 7** Encounters with FE and HE
- 8** Personal Guidance

Our Careers Promise at St Paul's Academy

- 1. Clear Plan** – A stable careers programme for every student.
- 2. Real-World Links** – Encounters with employers and professionals.
- 3. Hands-On Experience** – Workplace visits and work experience.
- 4. Personal Guidance** – Tailored advice for every pathway.
- 5. Learning with Purpose** – Connecting subjects to future careers.



You are God's work of art

Careers and the Gatsby Benchmarks

Careers education learning journey (11 - 16)



Career Events in Year 11:

- Green Careers Week
- Year 11: CTK Emmanuel Vocational Pathways (Baker Clause)
- Year 10 and 11 Career Fair (STEM, Post-16, Industry and Alumni)
- National Apprenticeship Week
- Industry Encounters visits (subject-based)
- Keynote speaker series Year 9-11 Post-16 Providers and Industry (Wednesday Career Hub)
- Bank of England keynote speaker Year 9-11
- Year 11: North Kent College Vocational pathways (Baker's Clause)
- Colfe's HPA applications for the Leathersellers' Scholarship



National Careers Week



Benchmark 1: A Stable Careers Programme

At St Paul's Academy, we provide:

- **Structured Careers Programme** – lessons, workshops & events from Year 7–11.
- **Real Experiences** – careers fairs, workplace visits & alumni webinars.
- **Employer & Education Links** – talks from industry leaders, colleges & universities.
- **Personal Guidance** – 1:1 interviews & tailored support, including SEND.
- **Unifrog Platform** – integrated careers tool for decision-making & skills building.



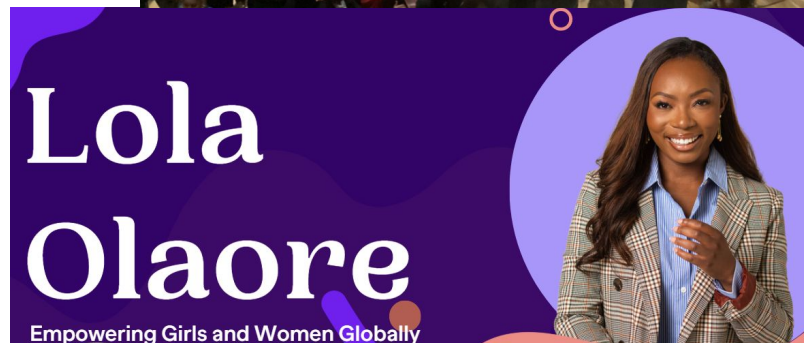
You are God's work of art

Careers and the Gatsby Benchmarks

Benchmark 2: Learning from Career & Labour Market Information

At St Paul's Academy, we provide:

- **High-quality guidance** – Unifrog, careers interviews & group sessions.
- **Clear pathways** – From apprenticeships to top universities.
- **Alumni inspiration** – e.g., Lola Olaore, founder of Bloss.M & Harvard student.
- **Parent support** – Website, coffee mornings & parents' evenings.
- **Real experiences** – Work placements, employer encounters & visits to Oxford & Cambridge.





You are God's work of art

Careers and the Gatsby Benchmarks

Benchmark 3: Addressing the need of each pupil:

At St Paul's Academy, we provide:

- Personalised career guidance
- Specialist SEND support
- Parent & family engagement
- Work placements & experiences
- Targeted trips & programmes



I thoroughly enjoyed the Peabody apprenticeship assembly because it allowed us to understand the different routes available for us instead of the normal route of graduating from university and made me more aware of what we could do.

- Year 9 student



CAREERS SPA SPOTLIGHT SESSIONS

Illuminating perspectives, sparking change.

EVERY TUESDAY

🕒 3:15 PM - 4:15 PM

ST PAUL'S ACADEMY

Join us for weekly keynote speaker sessions featuring inspiring voices from industry and higher education.



Professionals



College Speakers



Fresh Ideas

Be there. Be inspired. Be the change.



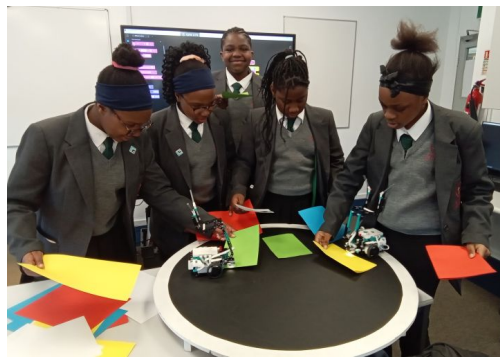
You are God's work of art

Careers and the Gatsby Benchmarks

Benchmark 4: Linking Curriculum Learning to Careers

At St Paul's Academy, we provide:

- **Classroom to careers** – Subjects linked directly to future opportunities
- **Hands-on learning** – Year 7 Lego coding at Colfe's Independent School
- **Career-focused weeks** – NAW, NCW & GCW resources across all subjects
- **Alumni connections** – Year 9 Options Fair with subject-linked role models
- **Ongoing reinforcement** – Posters, tutor sessions & Enterprise Curriculum (Y7–9)



Lego coding for Computer Science at our wider partnership Colfe's Independent School



Bank of England SPA Spotlight Session



Bank of England



You are God's work of art

Careers and the Gatsby Benchmarks

Benchmark 5: Encounters with Employers and Employees

At St Paul's Academy, we provide:

- **Alumni inspiration** – “*St Paul's Made Me*” assemblies
- **Career Hub speakers** – Weekly industry keynotes (Y9–11)
- **Careers fairs** – Woolwich Works & SPA Post-16 Fair
- **Workplace visits** – Sky Studios, Deutsche Bank *Girls into Finance*
- **Employer encounters** – Peabody Careers Carousel & Year 9 Options Fair



*YouthBuild
Employer
Encounter*

Green Careers Virtual webinars for Green Careers Week in 2025

DAY of the Week	Virtual Events
Monday	Simeon - Sustainability Manager 12-12.30pm (Hall)
Tuesday	11-12 midday - Get Ready for Green Careers (period 3) Live webinar with STEM Leading ambassadors (Hall) Belinder Bird - Farm Manager 12-12.30pm (Hall)
Wednesday	Tom, Natasha and Freddie- Forestry Managers 12-12.30pm (Hall)
Thursday	8.40am to 9.10am- Green Energy Saving the World. Join STEM Ambassador Rallou, a Chemical Engineer (MEng, MSc) specialising in Materials Science and Technology, for an engaging live talk - perfectly aligned with Green Careers Week! (Large Meeting Room) 11-12 midday Exploring Green Careers in Engineering and Technology - British Airways. (Hall) Dave Cliff and Rob Driver 12-12.30pm Volunteering Community (Hall)
Friday	Kevin Rose- Design Manager Green Recovery 12-12.30pm (Hall)





You are God's work of art

Careers and the Gatsby Benchmarks

Please see the list of our 2024-2025 Work Experience Partners for Year 10 below.

Benchmark 6: Experience of work places At St Paul's Academy, we provide:

- **Real placements** – Lovell's Construction, British Race Course & Peabody Horse residential (Y10)
- **Face-to-face return** – First workplace placements since 2011 (Y10)
- **Virtual experience** – Springpod programme access (Y10)
- **Opportunities shared** – Google Classroom postings for students & parents (All Years)
- **In-house programme** – Trips to Shooters Hill & YouthBuild for unsuccessful applicants



“All the girls have been superb, supporting children in Plumstead and Slade Green extremely well. They got involved across the different sectors of the business, were punctual, and attended every day. We loved having them with us and would, of course, be delighted to host St. Paul's Academy students again.” (Homestart Greenwich)



You are God's work of art

Careers and the Gatsby Benchmarks

Benchmark 7: Encounters with FE and HE (At St Paul's Academy, we provide:

- **Early exposure** – Year 7 maths & computer science visit to Colfe's
- **University programmes** – St Catherine's Catalyst & University Oxford residentials (Y8 & Y10)
- **T-Level & vocational insight** – Assemblies and experience days with CTK, Leigh Academy & North Kent College (Y9–10)
- **A-level tasters & college visits** – Colfe's Science, CTK St Mary's & Shooters Hill (Y10)
- **Post-16 guidance** – SPA Post-16 & Careers Fair (Y10–11)



T-Level taster day at Shooters Hill

“The campus was amazing, and hearing from actual Oxford students made it feel more real. I'm definitely feeling more motivated after this trip.”

Assemblies	North Kent College	London South East Colleges	CTK (all sites)	University of Greenwich	Shooters Hill
-------------------	--------------------	----------------------------	-----------------	-------------------------	---------------



You are God's work of
art

Careers and the Gatsby Benchmarks

Benchmark 8: Personal Guidance

- **Expert guidance** – Level 6/7 qualified adviser with 35 years' experience
- **One-to-one support** – Careers interviews Y7–11 with action plans
- **Full coverage** – 100% of students offered IAG interviews by age 16
- **SEND provision** – Specialist adviser for EHCP students (Y9 & Y11)
- **Ongoing support** – Follow-ups, group sessions, presentations, parents' evenings & GCSE Results Day



Mrs. Banbrook: Our Career Advisor with 35 years of experience



Year 10 University Summer Residential at Oxford



You are God's work of art

Careers and the Gatsby Benchmarks

What can you do?

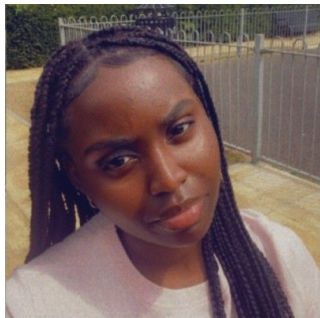
1. **Unifrog support** – Help your child set up login details
2. **Parent & Student Zone** – Careers advice on school website
3. **Engage with events** – Attend careers fairs, talks & workshops
4. **Research together** – Explore Post-16 & career pathways as a team
5. **Support decisions** – Encourage informed, confident next steps

The screenshot shows the St Paul's Academy website. The header includes the school logo, name, and navigation links: Home, About the School, Curriculum, Parents and Carers, Students (highlighted), Join Us, Contact, and Venue Hire. Below the header, a breadcrumb trail reads: HOME > STUDENTS > CAREERS EDUCATION, INFORMATION, ADVICE AND GUIDANCE. The main heading is "Careers Education, Information, Advice and Guidance". To the right, a red sidebar titled "In This Section" lists: Parent and Student Zone, Staff Zone, and Employer Zone. At the bottom, there is a section titled "Purpose of Study" with a small image of people in a classroom.



You are God's work of art

Alumni - How St Paul's Made Me



Victoria Osadebe
Class of 2025



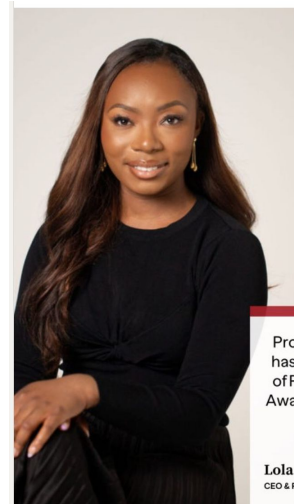
Clayton Wambu
Class of 2023



Karen Sarmiento
Class of 2015



Software Engineer in
Zurich, Switzerland



Lola Olaore
Class of 2010



Proud that our Founder Lola has been shortlisted for Best of Royal Greenwich Business Awards, Entrepreneur - Under 30 category

Lola
CEO & Founder of blossom



Where will your St Paul's journey take you?



You are God's
work of art

Thank you for joining us this evening

Big Moments: Key Dates for Y11

PPE 1 begins
24th Nov 2025

PPE 1 Results Assembly
19th Dec 2025

**TERMINAL EXAMS
BEGIN**
4th May 2026

May Half Term Revision
26th - 28th May

**End of Examination
Season** 17th June 2025

Careers Fair
7th Oct 2025

Parents' Evening
21st Jan 2026

Easter Revision
31st Mar - 2nd Apr

Celebration Assembly
13th April



PPE 2 begins
23rd Feb 2026

PPE 2 Results Assembly
23rd March 2026

Leavers' Service
17th June 2026

PROM
19th June 2026

