

# St Paul's Academy Open Morning

Jonathan Ronan CEO

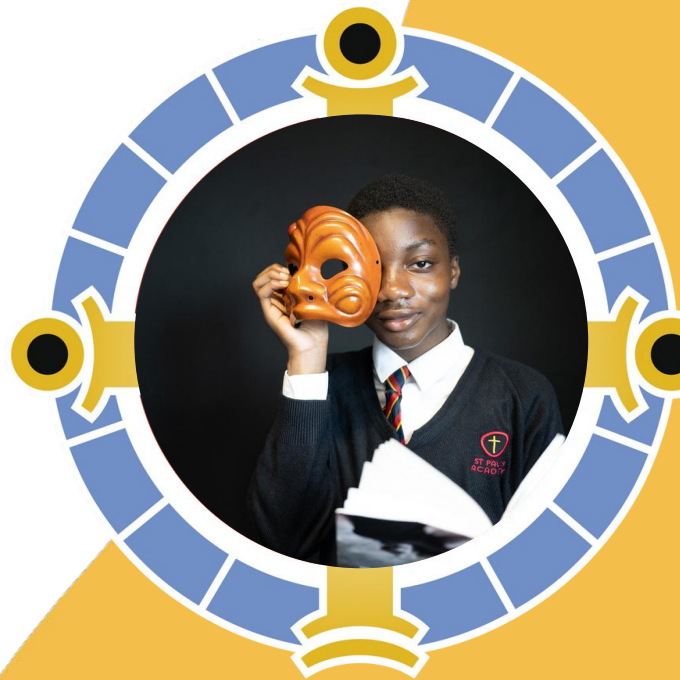




**St Benedict**  
CATHOLIC ACADEMY TRUST

# Proudly part of St Benedict Catholic Academy Trust

**St Paul's Academy officially joined SBCAT in April 2025,  
strengthening our shared mission of excellence in Catholic  
education and opening new opportunities for our students, staff,  
and wider community.**





# Our Mission, Vision & Values

## Our Mission

Our Mission is inspired by our Patron St Benedict, to live, learn, pray and celebrate together. Our community of Catholic schools are committed to ensuring that each child realises their God given gifts. Our strong sense of community promotes Gospel values which inspire students to make a positive contribution to society.

## Vision Statement

As a family of schools, our vision is to be a beacon of exceptional Catholic education.

## Our Aims

- Ensure that our children achieve the best possible outcomes
- Develop the whole child; personally, culturally and spiritually
- Be inclusive; have a particular commitment to our most vulnerable children
- Teach our children to live well together and to make wise choices
- Ensure that our children are safe from harm
- Work to ensure that our schools are enjoyable places for children to learn



**St Benedict**  
CATHOLIC ACADEMY TRUST

# Our Secondary Schools



**Bonus Pastor  
Catholic College**



**Ofsted Inspection -  
October 2023**



**St Matthew  
Academy**



**Ofsted Inspection -  
March 2025**



**St Michael's Catholic  
College**



**Ofsted Inspection -  
April 2025**

# St Paul's Journey

*What does the next two years look like?*



## Outstanding Outcomes

Over the next two years, our focus will be on building strong foundations for outstanding outcomes for all students, investing in staff development, and strengthening our Catholic ethos and community partnerships.

Ofsted inspection anticipated in 2027 our aim is clear: to demonstrate excellence across teaching, learning, and leadership, ensuring every student thrives academically, spiritually, and personally.



## St Benedict Enrichment

- The St Benedict Games
- The Student Trust Board
- Opportunities for Leadership and courses





# St Paul's Academy Commitment to Students



“ Pupils feel part of a caring school community. Typically, they enjoy respectful working relationships with staff and with each other. Pupils have opportunities to develop their leadership skills. They take part in fundraising events, such as sponsored walks for charity. Pupils run a food bank to help local families. They can train as mentors in support of their peers. Pupils take part in the annual musical production and have organised a cultural day.

**Ofsted Report 2023**



“ Students readily take on leadership opportunities to put their faith into action, speaking openly about how, when working in their respective roles, they live out Catholic social teachings.

**CSI Report 2024**

**Community of Welcome**

**Justice Makers**

**Seekers of Truth**



**Thank you!**



You are God's  
work of art

# Principal's Welcome

**Saturday 27<sup>th</sup> September**

*At St Paul's you are known, heard, seen and loved.*

## Service

*Emphasizing a community that serves others with compassion and dedication.*

## Ambition

*Encouraging the pursuit of excellence and personal growth.*

## Inclusion

*Fostering a welcoming and inclusive community for everyone.*

## Nurture

*Caring for each other's growth and well-being.*

## Truth

*Seeking and upholding truth in all things.*

## Peace

*Promoting justice and harmony, reflecting the common good.*

## Achievement

*Striving for excellence in all endeavors.*

## Unity

*Building a strong, supportive community.*

## Love

*Embodying love and compassion in all actions.*

## Stewardship

*Caring for the common good and the world around us.*

S I N C E 1 9 6 8



ST PAUL'S ACADEMY

***"You are God's  
work of art"***

## Service

*Emphasizing a community that serves others with compassion and dedication.*

## Ambition

*Encouraging the pursuit of excellence and personal growth.*

## Inclusion

*Fostering a welcoming and inclusive community for everyone.*

## Nurture

*Caring for each other's growth and well-being.*

## Truth

*Seeking and upholding truth in all things.*

## Peace

*Promoting justice and harmony, reflecting the common good.*

## Achievement

*Striving for excellence in all endeavors.*

## Unity

*Building a strong, supportive community.*

## Love

*Embodying love and compassion in all actions.*

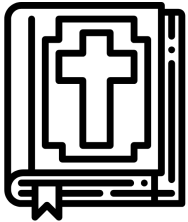
## Stewardship

*Caring for the common good and the world around us.*

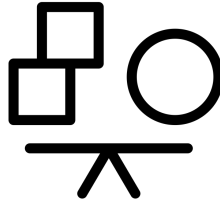


You are God's  
work of art

# Why join the St Paul's community?



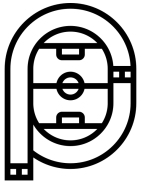
A Catholic education  
based on shared values



A broad and balanced  
curriculum



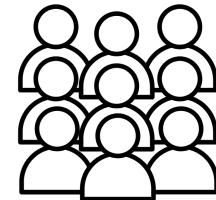
Outstanding pastoral care and  
support



Excellent sports  
facilities



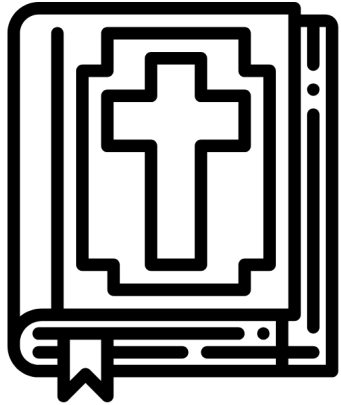
Exceptional enrichment, personal  
development and leadership  
opportunities.



A school where every child is known,  
heard, seen and loved.



You are God's  
work of art



**A Catholic education  
based on shared values**



You are God's  
work of art

# Catholic Life of the School

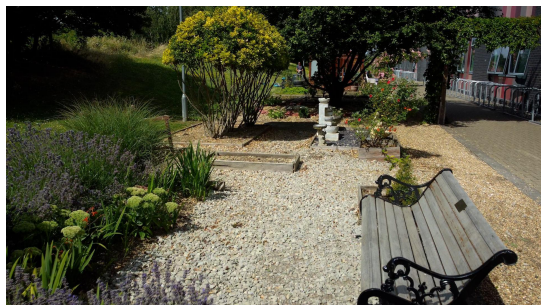
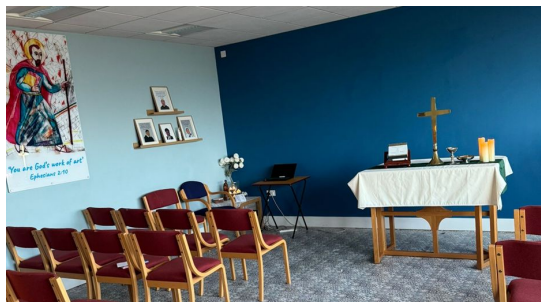




You are God's work of art

# Catholic life of the School

## Our Chapel & Peace Garden



## The Catholic Life of the School

Where every child is known, heard, seen and loved.



## Events with the Church





You are God's work of art

# Events throughout the year

## Our Charities

Weybourne  
Care Home



**The Catholic  
Life of the School**

Where every child is known,  
heard, seen and loved.





You are God's work of art

# Faith in Action

**BRIGHTEN UP** this HARVEST and BUILD a BRIGHTER WORLD



Brighten up - fundraising for CAFOD

**CAFOD** Catholic Agency for Overseas Development

St Paul's Academy, Royal Greenwich @STPGreenwich **Follow**

The youthSVP are busy putting together food parcels for the local community.

#faithinaction



8:31 AM · Jul 21, 2023 · 1,479 Views

Christmas Hamper creation



Christmas Gift donations to Bexley Council Foster Care department



Carol singing at Weybourne Care home



Christmas Jumper Day





You are God's  
work of art

# Celebrating Cultural Differences in the Catholic Community



St Paul's Academy, Royal Boroug! @STPG · May 11, 2023

Promote

...

A beautiful end to a beautiful day! Thank you to everyone who dressed in their cultural dress and made it so special 🇮🇹 🇨🇳 🇩🇪 🇬🇧 🇪🇺 🇨🇦 🇮🇳 🇮🇳 🇮🇳





You  
wo

You are God's work of  
art

# House System - linked to our values



St Carlo Akutis

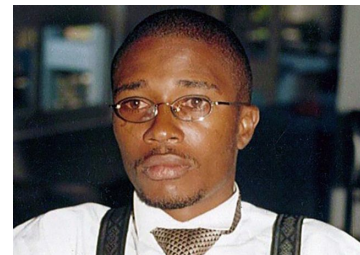
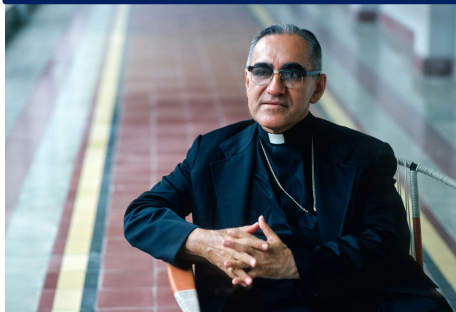


Blessed Chiara Badano



Blessed Josephine Bakhita

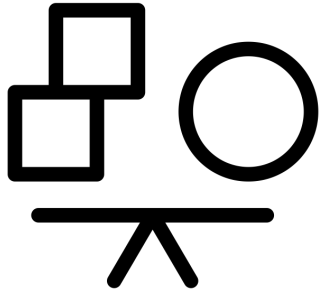
Blessed Oscar Romero



Blessed Floribert Kositi



You are God's  
work of art



# A broad and balanced curriculum



You are God's work of  
art

# The results speak for themselves



Victoria Osadebe  
Class of 2025

Our Students perform  
above national average.

Projected Progress 8  
based on MidYis of **0.15**



COLFE'S  
SCHOOL



You are God's work of  
art

# A Broad and Balanced Curriculum

## The Foundational Key Stage 3 subjects:

English, Mathematics,  
Science, Religious  
Studies, Geography,  
History, Spanish,  
Computer Science,  
Physical Education, Art,  
Food Technology,  
Technology

## A broad Key Stage 3... all this... PLUS

Drama, Dance, Music,  
Textiles and Enterprise

## Options at KS4

Psychology, Business  
Studies, Health and  
Social Care,  
Astronomy, Dance,  
Drama, Photography,  
Media

Key Stage 4 Options – all of the above

# Curriculum Support and Home Learning



Google Classroom

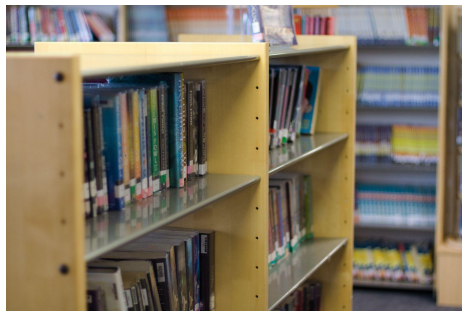




You are God's work of  
art

# Literacy

How we are supporting and challenging  
students

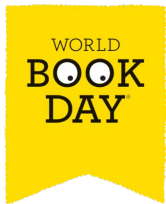




LITERACY



AT ST PAUL'S  
ACADEMY





You are God's work  
of art

# Key Features of our new Library



Silent Reading  
Zone



Quiet Study  
Zone



Research  
Zone

**Find your space! Whether it's reading quietly, working on a project, or using digital tools, there's a place for you here.**



You are God's work of art

# SEND

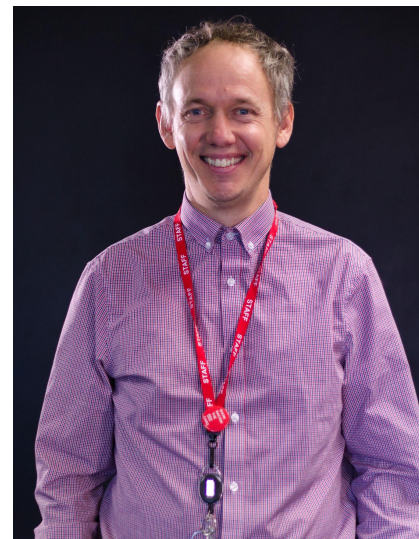
How we are supporting students with SEND



Ms Tomkins



Mr Bargery



Mr Gladman



You are God's work of art

# SEND at St Paul's - How do we support your child?

## Literacy:

Rapid Plus  
Lexonik Plus & Advance  
Steps  
Toe by Toe  
Supported Reading

## Speech and Language Therapy:

Comprehension monitoring  
Shape Coding  
Language for Behaviour and Learning  
Language for Thinking  
Colourful Semantics  
Word Aware  
Lego Therapy  
Talkabout

## ASC Support:

Attention Bucket  
Sensory Circuits  
Sensory Time  
Social Skills  
Resource Provision

## Bespoke Support:

Additional Intervention

## SEND Clubs & Groups:

Lunch and Break Time Club  
Zones of Regulation  
SEND Homework Club

## Functional Skills:

Functional Skills Maths  
Functional Skills English



You are God's work of  
art



# Outstanding pastoral care and support



You are God's work of art

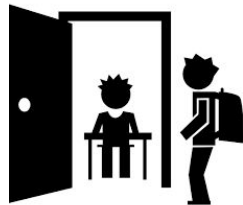
# Expectations of your child every day

I will be...



Professional

I will only wear SPA items. My shirt, skirt, trousers and and tie are worn properly



Present & Punctual

I will arrive on time & always concentrate on my learning



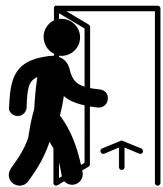
Equipped

I will treat books and equipment with pride.



Respectful & Welcoming

I will show respect and good manners to **everyone** I meet



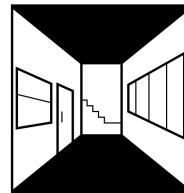
Calm when exiting lessons

I will tidy; stand behind my chair; leave calmly



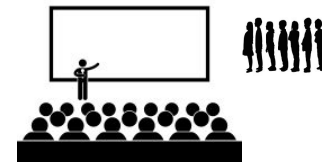
Responsible during break/lunch

I will enjoy break safely and then move to lesson promptly



Safe when moving around

I will **always** take the quickest route to my lesson



Silent in line ups & assembly

I will track the speaker; silently line up & sit in alphabetical order



You are God's  
work of art

# Expectations for our partnership with you



## Attendance & Punctuality

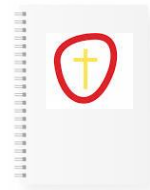
Parents/Carers support students to be in **and** on time every day

\*other than medical or family emergencies



## Equipment & Uniform

Parents/Carers should provide full equipment & uniform everyday.



## Home-learning

Parents/Carers should check Google Classroom and edulink for homework weekly



## SPA Guarantee

Parents/Carers should encourage participation in opportunities



## Independent Study

Parents/Carers direct students to private study areas

\*At home and/or school



## Diet, Exercise & Sleep

Parents/Carers should encourage a healthy lifestyle



## Internet Awareness

Parents/Carers should monitor internet & mobile use



## Celebrate Learning

Celebrate progress; celebrate challenges; discuss next steps



You are God's work of art

# Behaviour Expectations

**BE** Safe  
**BE** Respectful  
**BE** Ready for Learning



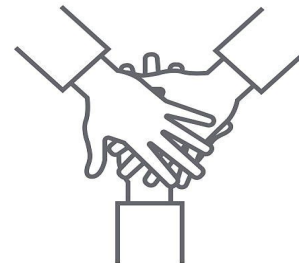
You are God's work of art



School

Home

Success isn't built alone - it's built when we all work together.



Student





You are God's work of art

# Pastoral Support and Wellbeing

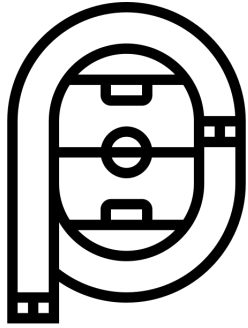
## Whole school support

- Learning Mentors & Pastoral Managers
  - 1:1 and small group
  - Mental health, friendships, transition, social skills
- Counselling [internal & external]
- Medical needs
- Mental Health First Aiders
- School Nursing Team
- Charlton Athletic Community Trust
- XLP Youth Workers





You are God's work of  
art



# Excellent sports facilities



You are God's work of art

# Excellent Facilities



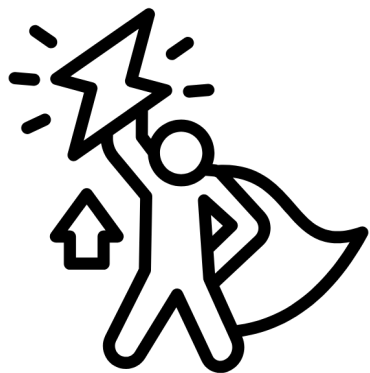


We have a range of sport teams across all year groups





You are God's work of  
art



**Exceptional enrichment,  
personal development and  
leadership opportunities**



You are God's work of art

# Beyond the classroom



Monday	Tuesday	Wednesday	Thursday	Friday
<b>Year 8 Athletics</b> lunchtime Sports Hall	<b>Year 7 Boys Football</b> 15:10 - 17:00 4G	<b>Morning Basketball</b> Sports Hall	<b>Year 7-11 Girls football</b> 15:10 - 17:00	<b>Year 7 Athletics</b> Sports Hall 15:10 - 17:00
<b>Year 8 Boys Football</b> 15:10 - 17:00 Grass Pitch	<b>Year 9 Boys Football</b> 15:10 - 17:00 4G	<b>Year 7 - 11 Percussion Club</b> 14:20 - 15:10	<b>Fitness Suite</b> 15:10 - 16:20	<b>Year 8 Boys Football Training</b> 15:10 - 17:00
<b>Year 10 &amp; 11 Football</b> 15:10 - 17:00 4G	<b>Year 8 &amp; 11 Netball</b> 15:10-16:30 Sports H/Muga		<b>Recreational Football</b> 15:10 - 16:20	<b>Year 7 - 11 Dance Freestyle</b> 15:10 - 16:00
<b>Year 7, 8, &amp; 10 Netball</b> 15:10 - 16:30 Sports Hall / Muga	<b>Year 7-11 Fusion Dance</b> 15:10 - 16:00 Dance Studio		<b>Year 7 - 11 Afro Dance</b> 15:01 - 16:00	<b>Cultural Diversity Club</b> 15:20 - 15:50 starting Spring Term 1
<b>Year 11 Duke of Edinburgh Bronze Award</b> 15:15 - 16:15	<b>Careers Keynote Speakers</b> 15:15 - 16:15 Main Hall		<b>Be Wild Club</b> 12:40 - 13:30	<b>Year 7 - 11 Band</b> 15:10 - 16:00
<b>Year 9 Homework Club</b> 15:20 - 16:00 Maths Cluster	<b>Year 8 Homework Club</b> 15:20 - 16:00 Maths Cluster		<b>Year 10 Homework Club</b> 15:20 - 16:00 Maths Cluster	<b>Year 7 Homework Club</b> 15:20 - 16:00 Maths Cluster
<b>Year 11 BTEC &amp; CS</b> Catch-up & Exam Prep 15:20 - 16:00	<b>Year 11 Hospitality &amp; Catering Boost My Skills</b> 15:10 - 16:20		<b>Year 7 - 11 Choir</b> 15:10 - 16:00	
<b>Year 9 &amp; 10 Drama</b> National Theatre News 15:20 - 16:00	<b>KS3 Art Exploring Different Media</b> 15:20 - 16:00		<b>Year 7, 9 &amp; 11 Keyboard Club</b> Lunchtime	
<b>KS3 Spanish Conversation Club</b> 15:20 - 16:00 E4	<b>Year 8 &amp; 9 Developing Oracy Skills Through Effective Speaking</b> 15:20 - 16:00 E7		<b>KS4 Spanish Conversation Club</b> 15:20 - 16:00 E4	
			<b>KS3 Media Film Club</b> 15:20 - 16:00	
			<b>Year 7 Science Club</b> 16:15 - 16:00 <i>S10 starts 03.10.25</i>	
			<b>Year 7 - Creative Writing</b> 15:20 - 16:00 E6	

**Health & Social Care:** Greenwich NHS  
(Y10-11, 14/11/25)

### English:

An Inspector Calls (Y10, 16/02/26)  
Poetry Tour (Y10, 18/05/26)

### Business & Enterprise

Bank of England (Y10, TBC)

### Geography

Nat. History Museum (Y9, 02/02/26)  
Reculver & Herne Bay (Y8, 20/04/26)  
Thames Barrier (Y7, 22/06/26)

### Media

Revision Study Day (Y11, 26/02/25)  
Sky Up Academy Fiction (Y10, 04/11/25)  
The Glassworker + Q&A (Y10, 12/11/25)  
Sky Up Academy Studios (Y10, 13/08/26)  
Into Film Festival (Y10, Aug 2026)

### ICT

Nat. Museum Computing (16/10/25)

**Dance:** Sadler's Wells (Y7-11, 01/12/25)  
Move It Dance (GCSE, 20/03/26)



### Careers

Keynote Speakers (All yrs, 09/09/25)

### Design Technology

Design Museum (Y11, 15/10/25)  
Design Trip (Y10, 11/02/26)

### PE

Rec Football GOALS (Y10, 15/10/25)

### Spanish

Pan's Labyrinth (Y11, 14/11/25)  
Penguin Lessons (Y10, 19/11/25)  
Spanish Cooking Workshop (Y9, TBC)

### Science

Science Museum (Y7, 13/10/25)  
Royal Observatory (Y8, 25/11/25)  
Urenco (Y10, 09/02/26)  
London Zoo (Y9, 17/04/26)

### History

Debate Mate (Launch Nov 2025, comps  
Jan–May)  
Windsor Castle (Y7, 14/11/25)

### DofE

Bronze Award Club (Y11, from 08/09/25)

### Drama

New Views Trip (Y10, Dec 2025)  
KS3 Theatre Trip (Y7-9, Feb 2026)  
KS3 Theatre Trip 2 (Y7-9, Jul 2026)



You are God's work of art



T-Level Taster at Shooters Hill

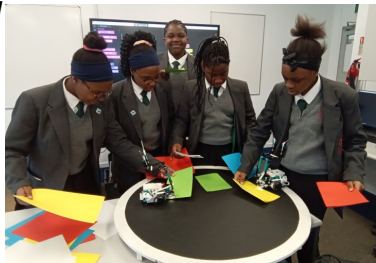


YouthBuild YB Construction



UNIVERSITY OF CAMBRIDGE

Colfe's Masterclasses Lego Coding



Cambridge University Trip



St Catherine's Catalyst Oxford

University Oxford



UNIVERSITY OF OXFORD

bloss•m Changing lives through female empowerment



Year 10 and 11 Career Fair at school



**CAREERS SPA SPOTLIGHT SESSIONS**  
 Illuminating perspectives, sparking change.  
**EVERY TUESDAY**  
 3:15 PM - 4:15 PM  
**ST PAUL'S ACADEMY**  
 Join us for weekly keynote speaker sessions featuring inspiring voices from industry and higher education.  
 Professionals College Speakers Fresh Ideas  
 Be there. Be inspired. Be the change.

SPA Spotlight Sessions with Employers



# Trips and Visits



You are God's work of art

St Paul's Academy, Royal Borough @STPG · Mar 4, 2023 Promote ...  
We met Vinne the #YSVP bear. Great to be with other #ysvp groups @FlameCongress



Flame Congress



Geography Fieldwork



T-Level taster at Shooters Hill



Peabody Career Carousel



Colfe's Independent School wider partnership

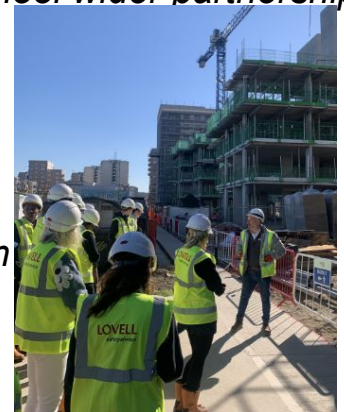


Go Ape Reward Trip



Ashford Retreat Year 7

Construction visit to Lovells





You are God's work of art

# Enrichment Clubs

*Garden Club*



*Woodland Trust tree planting*



*Volunteering Club*



*Gardening with Weybourne Care Home residents*



*Debate Mate Club*



*Be Wild Club*





You are God's work of art

# Enrichment Clubs



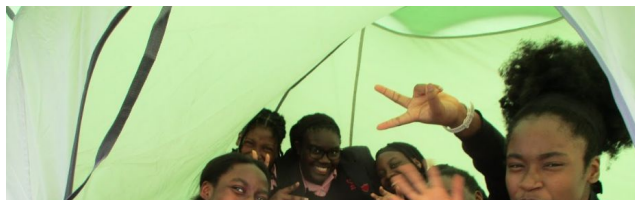
Artsmark Silver Award  
Awarded by Arts Council England

Performance Arts Clubs

Duke of Edinburgh Club



St Vincent de Paul Group



Sports Clubs





You are God's work of art



THE DUKE OF EDINBURGH'S AWARD

# Duke of Edinburgh & World Challenge

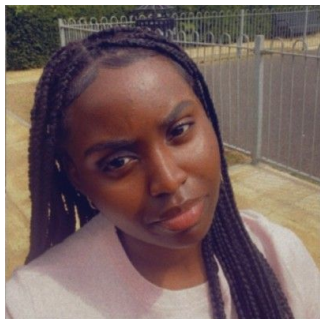


**Year 11 in 2026 will take part in World Challenge**



You are God's work of art

# Alumni - How St Paul's Made Me



Victoria Osadebe  
Class of 2025



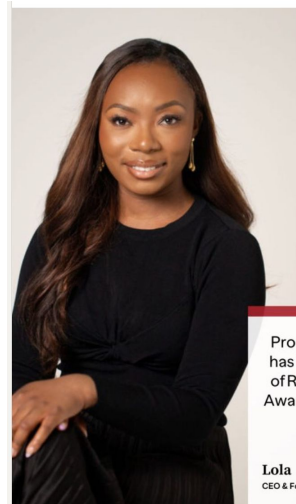
Clayton Wambu  
Class of 2023



Karen Sarmiento  
Class of 2015



Software Engineer in  
Zurich, Switzerland



Lola Olaore  
Class of 2010



Proud that our Founder Lola has been shortlisted for Best of Royal Greenwich Business Awards, Entrepreneur - Under 30 category

Lola  
CEO & Founder of blossom



## Where will your St Paul's journey take you?



# Alumni - How St Paul's Made Me

You are God's work of art



Jeremiah Adewunmi  
Cohort of 2021



Watchable by stpauls.greenwich.sch.uk.

You're on it – Download the HMRC app



HMRCgovuk  
95.1K subscribers

Subscribe

44



Share

Download

Save





You are God's work of art

# And we all know what he has done...



Patrick Okogwu  
Cohort of 2005





You are God's work of art

# SPA Student Leadership Opportunities

Can you lead as a



## Student Librarian

Promote, supervise and manage the library and library books



## Sports Ambassador

Represents the Academy in sporting events & support PE staff with clubs and events



## Head or Deputy Head Student

Represents the Academy and the student body, prompting & living the values of the school



## Wellbeing Ambassador

Mentoring students on emotional & physical wellbeing



## Form Time Ambassador

Support the daily routine, listen to the opinion of others and lead on other form time matters



## Subject Ambassador

Mentoring students on academic progression



## Student Councillor

Being the voice of the student body



## Language Ambassador

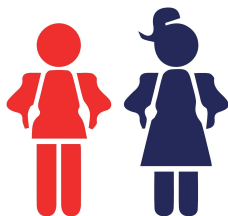
Welcoming & supporting students who have english as an additional language



You are God's work of art

# SPA Student Leadership **NEW** Opportunities

Can you lead as a



## **Prefect - Y7-Y10**

A role model and assistant to staff, helping to maintain order, discipline, and positive school culture by mentoring younger students, assisting at events, and embodying school values



## **St Paul's Luminaries**

Represent all year groups and regularly meet together to pray, reflect, plan and evaluate the liturgical and prayer life of the school



You are God's work of art



# What will Year 7 look like?





You are God's work of art

# Year 7: Weekly AM Tutor Time Schedule

	MONDAY	TUESDAY	WEDNESDAY	THURSDAY	FRIDAY
AM	<p>NEWSROUND/CURRENT AFFAIRS</p> <p>FORM DISCUSSIONS/CATCH UP</p> 	<p>READING</p> 	<p>READING</p> 	<p>PSHE / CAREERS</p> 	<p>ASSEMBLY DAY</p> 



You are God's work of  
art

# Year 7: Key Events

- **Summer School**
- **Information Evening**
- **Meet the Tutor**
- **Camp in School**
- **Christmas Enrichment Activity**
- **Parents' Evening**
- **Summer Enrichment Activity**



You are God's work of  
art

# Year 7: Celebrating Success

- **Half term Awards:** Assistant Principal, Head Of Year, Deputy Head Of Year and Learning Mentor
- **Uniform Rewards:** Best dressed form group
- **Attendance and Punctuality:** Form Trophy
- **Most improved:** Amazon voucher





You are God's work of art

# Our Students





You are God's work of  
art

# Admission Arrangements

All families must apply to the school of their choice via their home local authority by completing the Common Application Form (CAF).

**The deadline for this is 31st October.**

We have **140 Faith places and 70** for the Local community. Those applying for a faith place (for example practising Catholic or Christian) you will also need to complete a Supplementary Form which **MUST be returned to the school by 31st October.**

**Mrs Wood** is still available to answer any questions, queries or concerns and will provide you with a Supplementary Form if you require one. You will find her in the Restaurant ready to answer your questions.



## Coffee Mornings

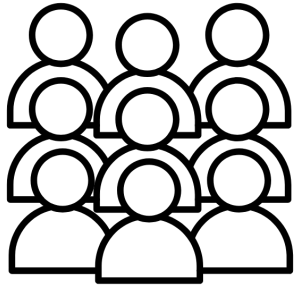
**Thursday 2nd October**  
9am-10.15am

**Thursday 9th October**  
9am-10.15am

**Thursday 16th October**  
9am-10.15am



You are God's  
work of art



# A school where every child is known, heard, seen and loved.





You are God's work of art

# Thank you for joining us today.

**We hope you enjoy your visit to our community today. Please do take time to look around, take part in the activities and speak to our staff and students. We would be very grateful if you could take the time to complete one of our surveys.**

## Community of Welcome

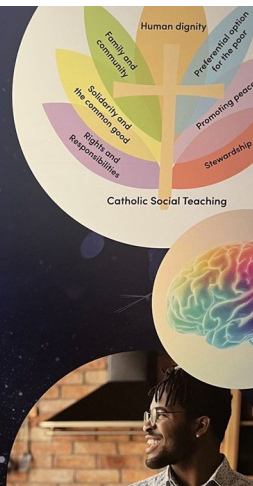
### You will find us

warm and welcoming  
friendly  
kind and caring  
supportive to others  
enthusiastic about learning  
inclusive  
multi-lingual

## Seekers of Truth

### We are

inquisitive  
critical thinkers  
accurate with our work  
reflective  
responsible  
well-read  
creative in self-expression  
self-aware  
willing to stand in the shoes of others  
responsive to feedback



## Justice Makers

### We will be

courageous  
upstanding  
good listeners  
responsible for our actions  
fair and democratic  
in solidarity with the poor  
stewards of creation  
protectors of human dignity  
working for the common good  
grateful and appreciative  
articulate  
open to new ideas